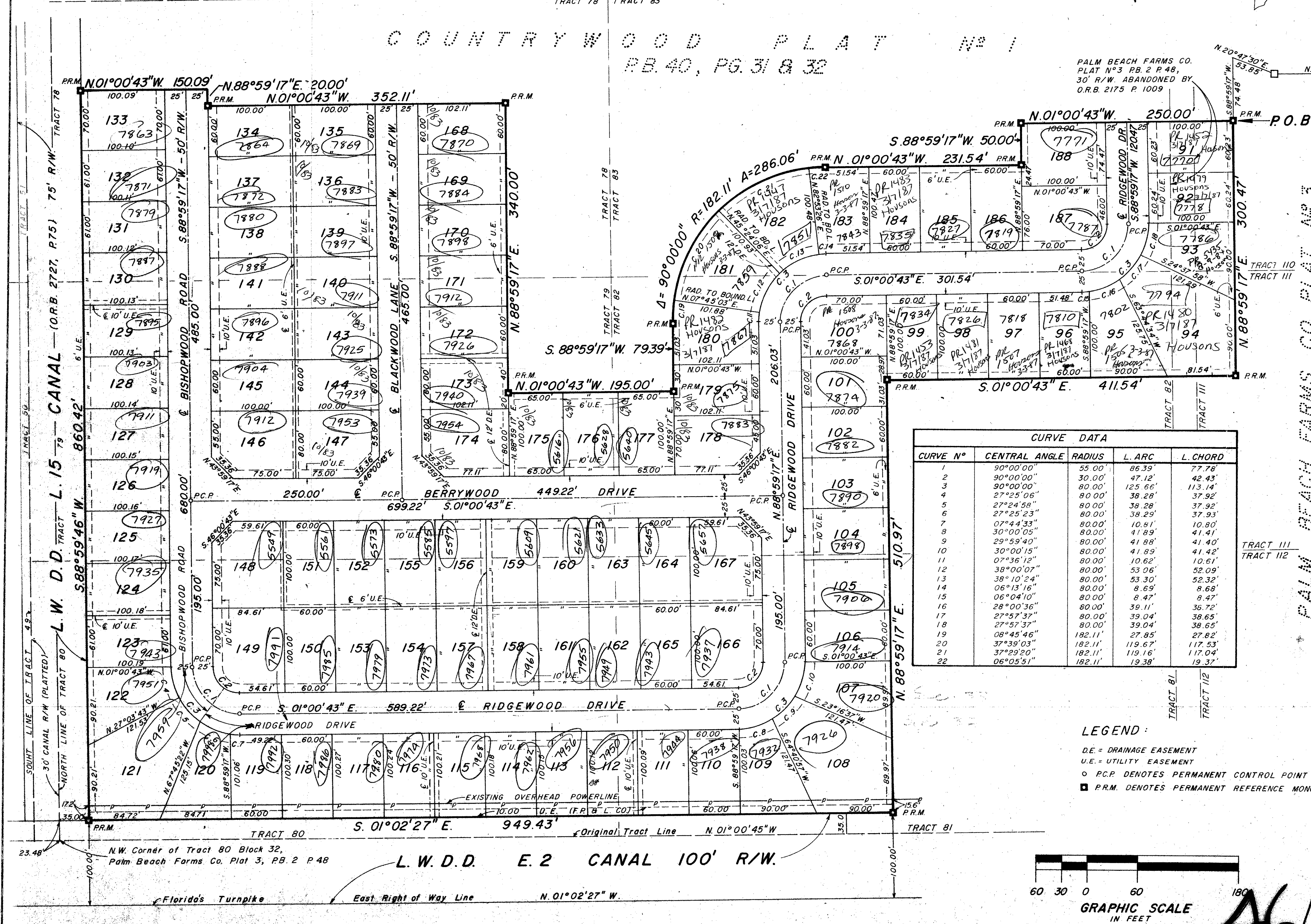
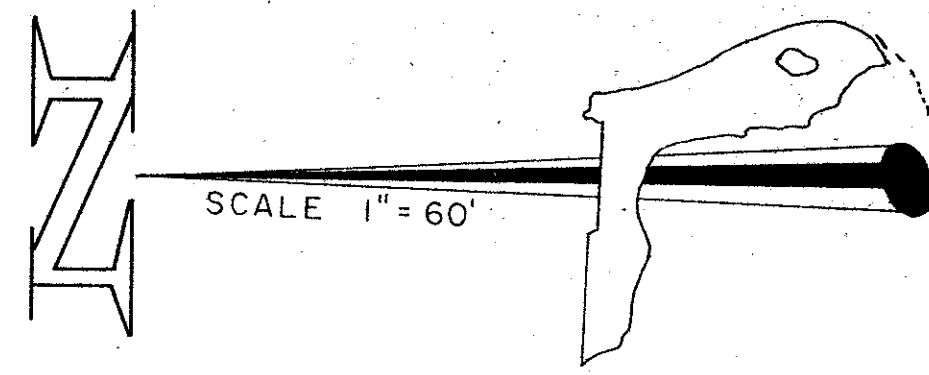


# COUNTRYWOOD PLAT N<sup>o</sup> 2

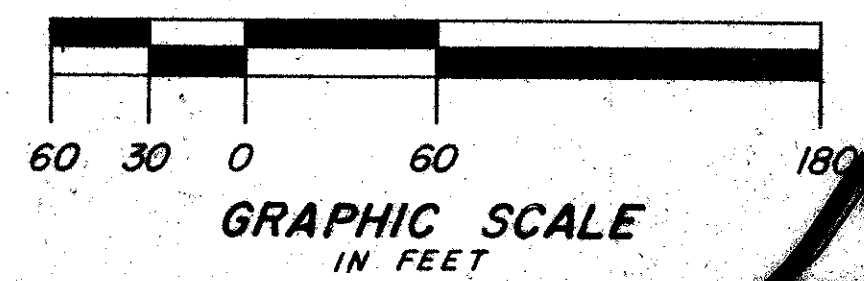
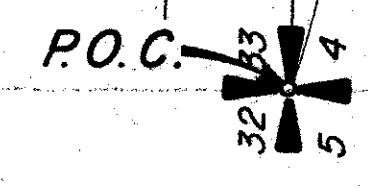
BEING A REPLAT OF A PORTION OF PALM BEACH FARMS CO. PLAT N<sup>o</sup> 3, P.B. 2, P. 48  
IN SECTIONS 32 & 33, TOWNSHIP 44 SOUTH, RANGE 42 EAST, PALM BEACH COUNTY, FLORIDA.  
OCTOBER 1982

46/8



CURVE DATA				
CURVE N <sup>o</sup>	CENTRAL ANGLE	RADIUS	L. ARC	L. CHORD
1	90°00'00"	55.00'	86.39'	77.78'
2	90°00'00"	30.00'	47.12'	42.43'
3	90°00'00"	80.00'	125.66'	113.14'
4	27°25'06"	80.00'	38.28'	37.92'
5	27°24'58"	80.00'	38.28'	37.92'
6	27°25'23"	80.00'	38.29'	37.93'
7	07°44'33"	80.00'	10.81'	10.80'
8	30°00'05"	80.00'	41.89'	41.41'
9	29°59'40"	80.00'	41.88'	41.40'
10	30°00'15"	80.00'	41.89'	41.42'
11	07°36'12"	80.00'	10.62'	10.61'
12	38°00'09"	80.00'	53.06'	52.09'
13	38°10'24"	80.00'	53.30'	52.32'
14	06°13'16"	80.00'	8.69'	8.68'
15	06°04'10"	80.00'	8.47'	8.47'
16	28°00'36"	80.00'	39.11'	36.72'
17	27°57'37"	80.00'	39.04'	36.65'
18	27°57'37"	80.00'	39.04'	36.65'
19	08°45'46"	182.11'	27.85'	27.82'
20	37°39'03"	182.11'	119.67'	117.04'
21	37°29'20"	182.11'	119.16'	117.04'
22	06°05'51"	182.11'	19.38'	19.37'

- LEGEND:**
- DE = DRAINAGE EASEMENT
  - U.E. = UTILITY EASEMENT
  - P.C.P. DENOTES PERMANENT CONTROL POINT
  - P.R.M. DENOTES PERMANENT REFERENCE MONUMENT



46/8

**COUNTRYWOOD 2**  
32433

SUBDIVISION *	COUNTRYWOOD 2
BOOK 46	PAGE 8
FLOOD ZONE B	FLOOD MAP #170A
QUAD * 48	ZONING RM
SE	ZIP CODE 33463
PUD NAME	INSP. AREA G

IN 2 SHEETS, SHEET N<sup>o</sup> 2

**FLORIDA SURVEYING & MAPPING, INC.**  
REGISTERED LAND SURVEYORS  
WEST PALM BEACH, FLORIDA 33406

SCALE 1" = 60'	REVISIONS	BY	DATE
DATE OCTOBER 1982			
DRAWN BY Ferdomo C.R.S.			
P.L.S.			

COUNTRYWOOD PLAT N<sup>o</sup> 2 182-70.D

PALM BEACH FARMS CO. PLAT N<sup>o</sup> 3 P.B. 2, PG. 48

PLAT N<sup>o</sup> 13, PALM BEACH FARMS CO.

0229-000